



# GAT MONTHLY MEMBERSHIP PROGRESS REPORT

Results as of: 11/30/2021

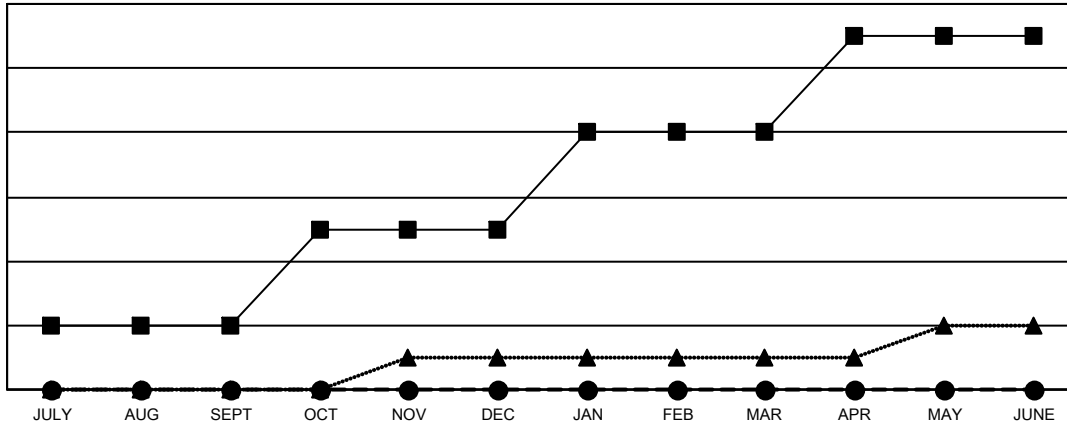
Multiple District 31

LOCATION: NORTH CAROLINA

Clubs			
RESULTS FOR 2021-2022			
QUARTER	NEW CLUB GOAL	NEW CLUBS	DROPPED CLUBS
JULY/AUG/SEPT	2	0	4
OCT/NOV/DEC	3	0	0
JAN/FEB/MAR	3	0	0
APR/MAY/JUNE	3	0	0

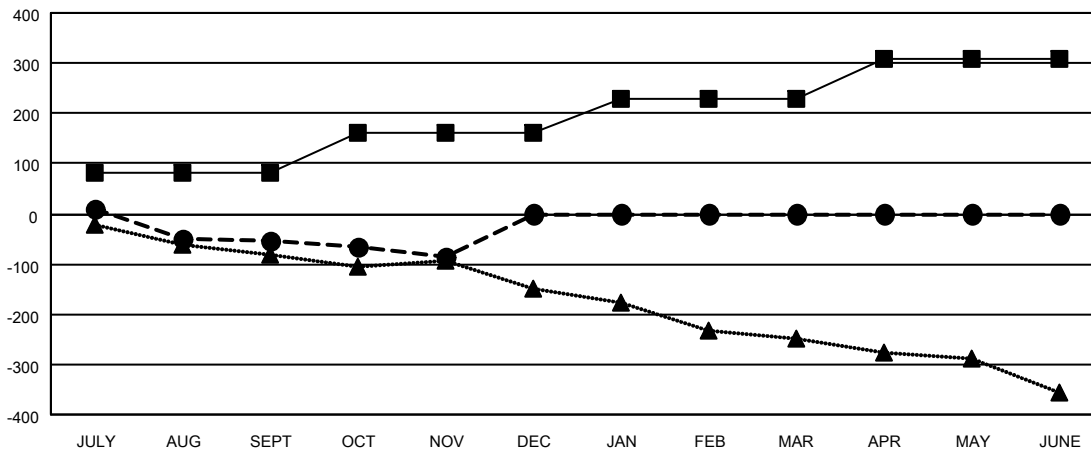
Members			
RESULTS FOR 2021-2022			
QUARTER	MEMBER GROWTH NET GOAL	MEMBER GROWTH ACTUAL	DROPPED MEMBERS ACTUAL (including transfers)
JULY/AUG/SEPT	82	130	171
OCT/NOV/DEC	80	103	93
JAN/FEB/MAR	67	0	0
APR/MAY/JUNE	80	0	0

GOALS AND ACTUAL NEW CLUBS CUMULATIVE



- - CURRENT YEAR GOALS FOR NEW CLUBS
- - CURRENT YEAR ACTUAL NEW CLUBS
- ▲ - LAST YEAR ACTUAL NEW CLUBS

GOALS AND ACTUAL MEMBERS CUMULATIVE



- - MEMBER GROWTH NET GOAL
- - MEMBER GROWTH ACTUAL
- ▲ - LAST YEAR MEMBERSHIP ACTUAL

DROPPED CLUBS: 4	
<b>DROPPED MEMBERS</b>	
DECEASED	48
CLUB CANCELLED	67
OTHER	149
<b>TOTAL</b>	<b>264</b>

77 CLUBS OF 263 ADDED 1 OR MORE NEW MEMBERS

[CLICK HERE FOR CUMULATIVE MEMBERSHIP DATA](#)

GENDER DISTRIBUTION	
MALE	3,303 (67.18%)
FEMALE	1,614 (32.82%)
NON BINARY	0 (0.00%)
PREFER NOT TO ANSWER	0 (0.00%)
<b>TOTAL FAMILY UNIT MEMBERS</b>	<b>1,122</b>
<b>FAMILY MEMBERS PAYING HALF DUES</b>	<b>576</b>